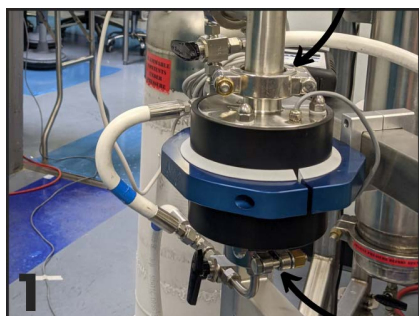


# Quick Start Guide

Page 1 of 2

EXTRACTION  
FINDER



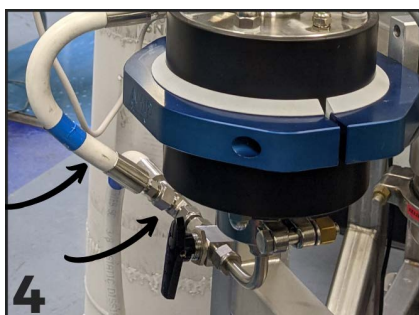
1 Mount **Extraction Finder Sensor Housing** securely.



2 On the bottom-end of Extraction Housing, connect a **1.5" Sanitary Flange to Hose Adapter** (or NPT or another connection) for incoming flow.



3 On the top-end, connect a second **1.5" Sanitary Flange to Hose Adapter** (or equivalent) for outgoing flow.



4 Install a **bypass, valved bleedport**.

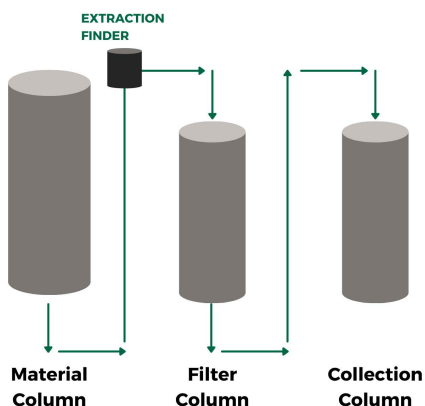


5 **Best Practice:** Set up an extraction adapter bypass (that can be quickly actuated through 3 way valves), a vent, and a pressure gauge.

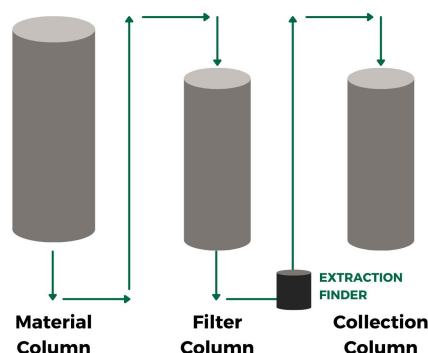


6 **Warning:** Ensure all connections are properly installed. Ensure the system and installation conform to all applicable laws and ordinances.

## LEAK TEST FITTINGS TO ENSURE INTEGRITY



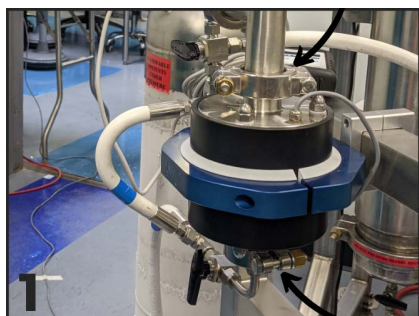
General Process Flow for Hydrocarbon Extraction



# Quick Start Guide

EXTRACTION  
FINDER

Page 2 of 2



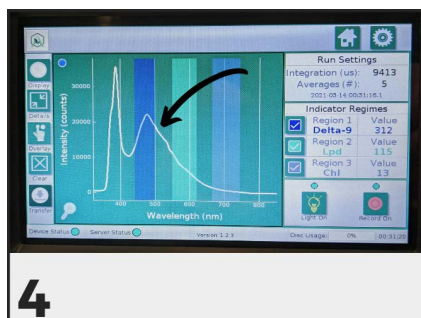
Ensure Extraction Finder Adapter is mounted securely.



Install the Digital Display using the 10' power supply & 30' sensor cable.

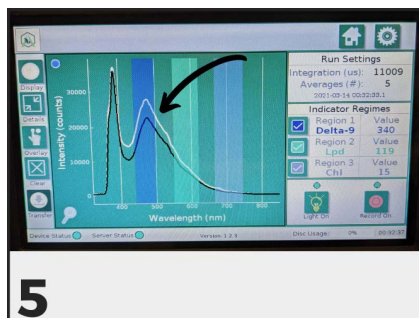


Prepare extraction as you typically would



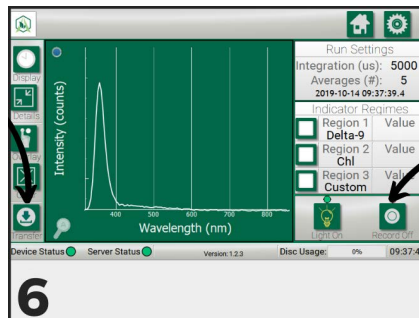
4

Identify signal increase after initial flow, then equilibrate with full flow.



5

Observe changes in Delta-9, Lipid and Chlorophyll levels. Use Overlay.



6

If you chose to record, toggle the Record button to Off. Then, Transfer.

Hydrocarbon  
Extraction  
Run Data

