



EXTRACTION FINDER

REAL-TIME MOLECULAR
MONITORING SYSTEM



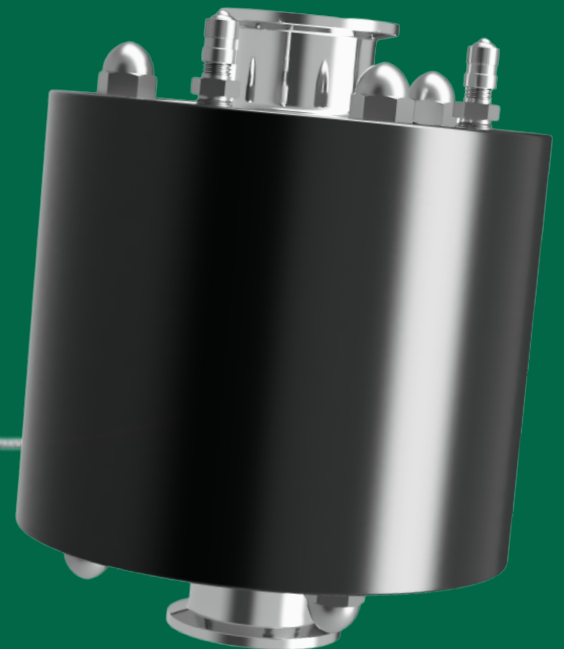
MEASURE CANNABINOIDS, LIPIDS,
AND CHLOROPHYLL LEVELS IN-LINE



REVOLUTIONARY LIVE ANALYTICS TO
INCREASE EXTRACTION EFFICIENCY



EASILY INSTALL IN-LINE IN
EXTRACTION SYSTEM DESIGN



SYSTEM SPECIFICATIONS

Applications: Hemp and Cannabis extraction processes

Molecular Indicators: Acidified Cannabinoids, Chlorophyll, and Lipids

Technology: Fluorescence spectroscopy

Compliance: Class 1 Division 1 (C1D1), PSI-Certified in all 50 states, ASME-U, NFPA 58 LPG

Solvents: Butane, Ethanol, Heptane, Hexane, Isopropanol, Methanol, Pentane, Propane, and Water

Monitor: 10" touch-screen display with stand (ROHS, CE)

Power: UL-marked power supply with 10' extension cable

Sensor: UV light source and full wavelength spectrometer

Sensor Cable: 30 feet

Wavelength of Excitation: 365 nm

Optical Detection Range: 300 – 1000 nanometers

Lower Detection Limit: Less than 0.1 mg/mL

Spectral Resolution: 15 nm max

Minimum Fluid Fill Level: 1/8 of sensor tube

Sanitary Flange End Clamps: 1.5" tri-clamp fittings

Operating Pressure: VAC to 350 psig

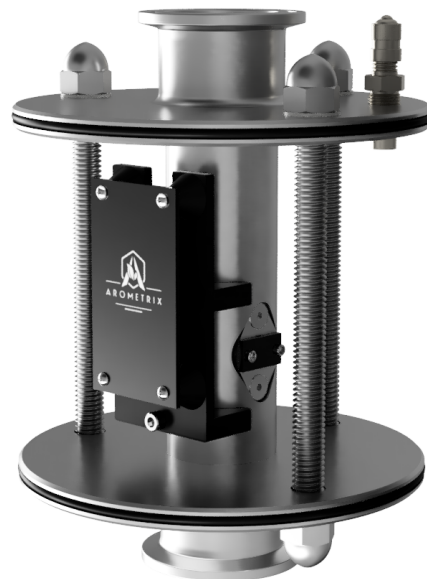
Operating Temperature: -100°F (min); 100°F (max)

Product Dimensions: 5.39" (W) x 6.63" (H)

Wetted Materials: 316SS, Teflon/PTFE gaskets, Sapphire windows

Materials Exposed to C1D1 Area: Delrin housing, 316SS, Teflon, Viton, Signal wire jacket

Tube Inner Diameter: 0.5"



Design Notes: Fluid will NOT touch the electronics. The sensor is intrinsically safe.

